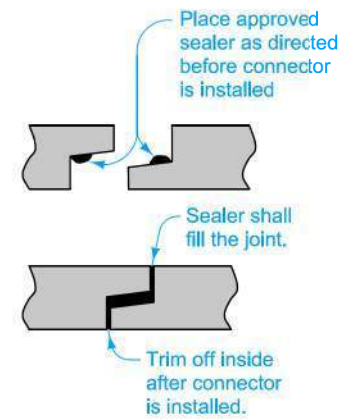
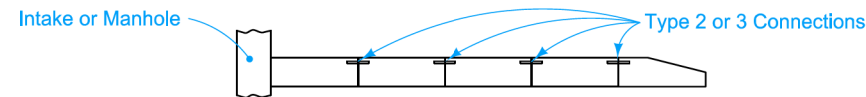


**TYPICAL SECTION
TYPE 2 CONNECTION
TYPE 3 CONNECTION**

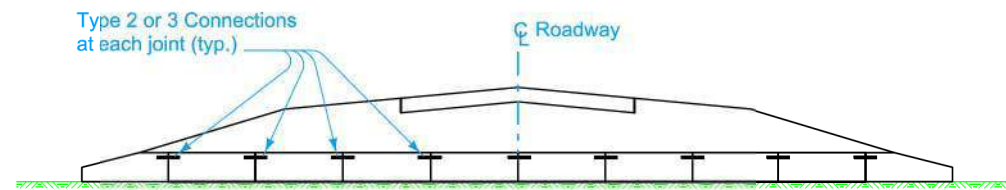


**SEALED JOINT
TYPE 2 CONNECTION**

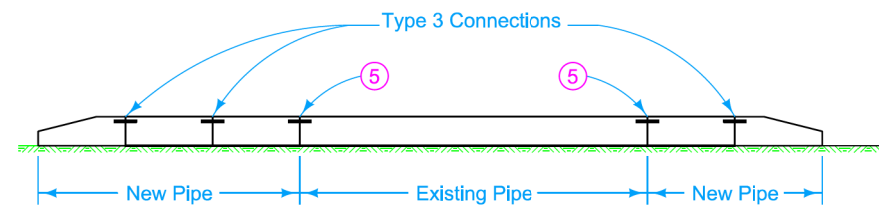
⑤ On culvert extensions, connect all new joints including the joint between the old and new culvert pipe. Holes may need to be drilled into existing pipes.



**TYPICAL INSTALLATION
STORM SEWER OUTLET - TYPE 2 OR TYPE 3 CONNECTION**



**TYPICAL INSTALLATION
NEW CONSTRUCTION - TYPE 2 or 3 CONNECTION**



**TYPICAL INSTALLATION
PIPE EXTENSION - TYPE 3 CONNECTION**

TYPE 2 AND TYPE 3 CONNECTIONS

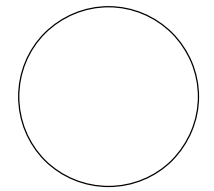
	REVISION	
	4	04-18-23
STANDARD ROAD PLAN		DR-121 SHEET 2 of 2

REVISIONS: Corrected title.

Shawn Miller
APPROVED BY DESIGN METHODS ENGINEER

CONNECTED PIPE JOINTS

CONSULTANT:



**IOWA DEPARTMENT OF
NATURAL RESOURCES**

ENGINEERING SERVICES - WALLACE BUILDING
502 E. 9TH ST., DES MOINES, IA 50319-0034

TYPICAL CROSS SECTIONS AND DETAILS

PAVEMENT PRESERVATION FOR:

HALES SLOUGH WMA

DICKINSON COUNTY

NO.	DATE	REVISION

DRAWN BY: BLF
PROJECT NUMBER: 22-01-30-02
CHK'D BY: DATE: JUNE 2024

SHEET No:

B.02

